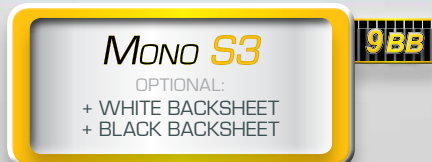
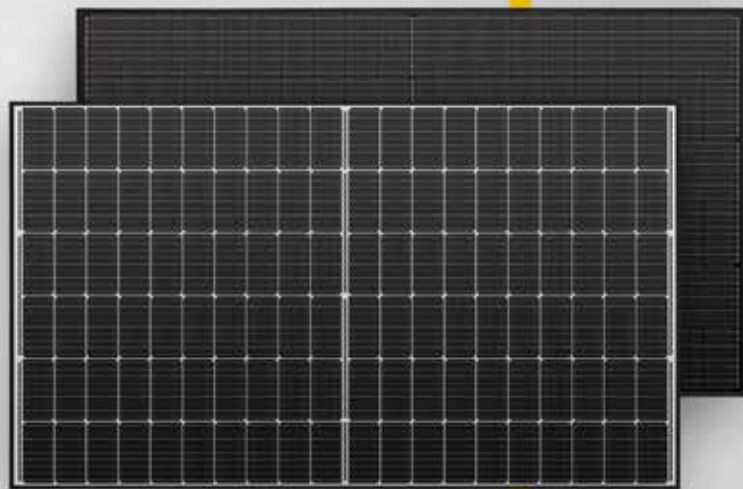




Solar Modules MONOCRYSTALLINE



Mono S3 - Halfcut

365 W • 370 W • 375 W

- Half cell modules
- High efficiency, high safety, high reliability
- High performance under low light conditions
- Resistant to environmental influences: Passed salt mist & ammonia test
- 9-busbar-technology - PID Free
- German warranty

Mono S3 - Halfcut


Electrical data under STC (Standard Test Conditions: 1000 W/m², 25 °C, AM 1.5)

Parameter	Symbol	365 W	370 W	375 W
Rated power	P_{max}	365 W	370 W	375 W
Sorting limits of performance		0/+3 %	0/+3 %	0/+3 %
Voltage	U_{MPP}	34.20 V	34.40 V	34.60 V
Open circuit voltage	U_{OC}	40.70 V	40.90 V	41.10 V
Current	I_{MPP}	10.68 A	10.76 A	10.84 A
Short-circuit current	I_{SC}	11.43 A	11.52 A	11.60 A
Efficiency		20.00 %	20.30 %	20.60 %

Temperature data

Operating temperature		- 40° C ~ + 85° C
Nominal operating cell temperature		45 ± 2° C
Power temperature coefficient	$T_k (P_{MPP})$	-0.390 %/K
Voltage temperature coefficient	$T_k (U_{OC})$	-0.295 %/K
Current temperature coefficient	$T_k (I_{SC})$	0.039 %/K

Further information

Number of cells	120 monocrystalline half cells (6 x 20)	
Size of cell	166 x 83 mm	
Module dimensions	1755 x 1038 x 35 mm	
Type of Frame	Anodized aluminium alloy	
Max. system voltage	1500 V	
Reverse current loading capability	20 A	
Glass thickness	3.2 mm	
Weight	19.5 kg	
Module connection	MC4 compatible, 4.0 mm ² , cable length: (+) ≥ 1200 mm, (-) ≥ 1200 mm	
Junction box rating	IP68	
Allowable Hail Load	25 mm iceball with velocity of 23 m/s	
Snow load	5400 Pa $\hat{=}$ 550 kg/m ²	

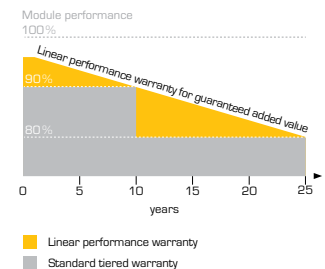
15-year product warranty, 25-year linear performance warranty according to our additional warranty conditions for solar power modules of the "Mono S3" product series, which we will gladly send you.

Subject to technical modifications with corresponding follow-up certifications. Errors excepted. Illustration similar.

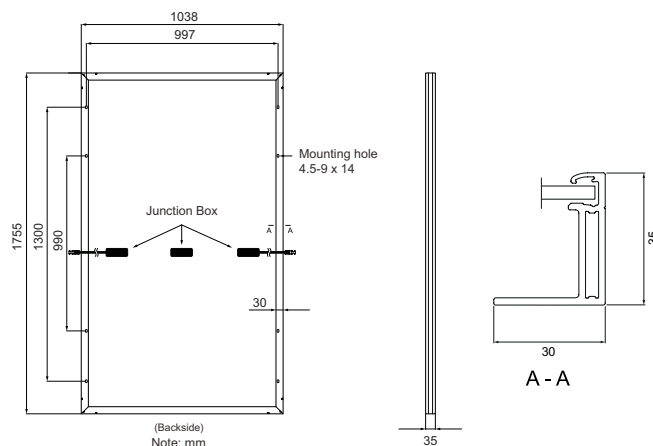
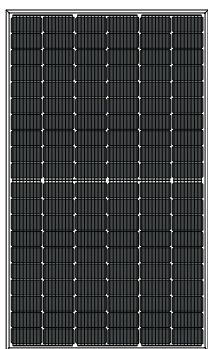
Packaging Specifications

Truck	
Dimension pallet (L/W/H)	180/113/117.5 cm
Weight pallet	approx. 635 kg
Modules per pallet	30
Modules per truck	840

Shipment	
Dimension pallet (L/W/H)	180/113/117.5 cm
Weight pallet	approx. 635 kg
Modules per pallet	30
Modules per container [40' HC]	780



Mono S3 - Halfcut (half cell module)



Note:
Ensure correct polarity!

Valid as of: 01.04.2020 / Document No.: 0420-M9-3-4-53-E

Your specialist dealer:

SF Solar Fabrik GmbH & Co. KG
Im Gewerbegebiet 12
63831 Wiesen
Germany

Phone: +49 (0)6096 9 700-790
Fax: +49 (0)6096 9 700-728
Mail: info@solar-fabrik.de
Web: www.solar-fabrik.de